



Lincoln Envirotown Trust Newsletter

June 2011

For the summary of up-coming events scroll to the end of this newsletter

Taking responsibility for a sustainable future

What's been happening?

Sue (and husband Peter) have been overseas for a few weeks so this newsletter will be a bit shorter than usual as Sue is recovering from:

Jet lag

Lack of sleep

Electrocution, lightning and mosquito bites (in Florence)

Getting lost (Rome) and finding the Coliseum kept appearing at the end of every street (or were we going in circles?)

Mad taxi drivers (Rome)

Too many pub lunches and cider (Cornwall – Sue blames her sister)

Too many evenings drinking Italian wine (Sue blames Peter)

Tripping over uneven Roman paving stones (Naples) and being rescued by a number of helpful Italian men

Having our tour bus boarded by 4 Italian police in Naples and the bus driver taken away (the tour guide blamed the Mafia)

And all together too much walking

BUT we had a really **GREAT** time travelling round the UK, Italy and also seeing something of Singapore. We saw a huge number of really old buildings, including many over 2000 years old. Made us sad about all those old (-ish) buildings lost in the Christchurch earthquakes. Will we ever manage to keep any Christchurch buildings to become old? We were also impressed by the support the British government was giving to distributed alternative power generation. Solar voltaic panels popping up on all the roofs, windmills decoratively lacing the hills in Cornwall. And Sue did manage to check LET email most days!



www.lincolnenvirotown.org.nz





Lincoln Community Gardens May Workshops

On Saturday 21st May two short workshops were held at the Lincoln Community Gardens and attracted a good audience of about 30 people.

Keith Dickson of Broadfields, who has spent a lifetime working with trees, shrubs and plants, explained the basics of the pruning of fruit trees.



Jonny Reveley shared his experiences with composting toilets as an alternative to chemical toilets. His interest in composting has been stimulated by the damage to the Christchurch sewerage system caused by the earthquakes and his desire to protect our environment.

Lincoln Community Gardens

For more information about getting involved in the garden please ring Ruth on 325 2193



Zerowaste Street Challenge - Perthshire Crescent now has its street sign – congratulations!

What is coming up?

Mahoe Reserve Planting Day



Your chance to plant a tree (or more) in our local Mahoe Reserve: you bring the tools and gloves, we provide the plants. We also need helpers to mulch the trees already planted.

When: Sunday 3rd July 2.00pm onwards

Where: Mahoe Reserve, Boundary Road, Lincoln, next to the Golf course, opposite the High School. For more information contact Sue Jarvis 3295858

The Mahoe Reserve relies on community helpers to keep going. If you are part of the Lincoln Community, or even if you are not, we would really appreciate your help at working bees, or at any time that suits you! Contact Denis on 325 2806

Friends of Mahoe

If you want to be on the email contact list for Mahoe planting days and working bees, let us know.

You are also welcome to join the Mahoe management committee. Only a few meetings a year! Contact Sue on 329 5858 or sue.jarvis@orcon.net.nz for information.

Lincoln Envirotown Trust Meetings – get involved, meet like-minded people

LET meetings are normally held the **FIRST MONDAY** of each month at 7:30 pm in the Lincoln Event Centre meeting room off North Belt. We often have guest speakers.

For more information Please contact Sue Jarvis, 329-5858 or sue.jarvis@orcon.net.nz.

NEXT meeting is July 4th The new SDC Solid Waste Manager, Gavin Sole, will speak about his vision of his new job at 7.30pm.

PLAN CHANGE 29

The Council has notified a change to the district plan to encourage and require improved design from development in town centers, including Lincoln. LET has put in a submission and the hearings will be in August or September. The full plan change is here:

<http://www.selwyn.govt.nz/services/planning/plan-changes/plan-change-29-design-of-development-in-business-1-zones/pc29-design-of-development-in-business-1-zones>

SHOP SMART
SHOP LOCAL

Lincoln Farmers & Craft Market

~Come and take a Fresh Look~



Locally grown produce
and crafts on your doorstep

Look at what your local community market has got in store for you!

**A GREAT RANGE OF LOCAL MARKET STALLS OF PRODUCE AND CRAFTS
ALL TOO GOOD TO MISS!!**

The winter market times will be once a month on the first Saturday of each month starting with May 7th 10am – 1pm. Ring Debbie 3295757 / 0274785005 for details or if you wish to have a stall.

www.selwynfarmersmarket.org.nz

Do you have environmental goods or services to advertise? Or does your business have a high standard of environmental management? We accept ads from businesses that fit with our aims. \$80 +GST for a full page, \$40 half a page etc. Not for profit environmental organisations may be accepted at no cost . Any money goes to support our activities promoting environmental sustainability.

Responsible Business Awards winners are on our web site:

www.lincolnenvironment.org.nz Let us know if you are a silver, gold or platinum winner and your details are not there – possibly because you haven't sent you details to us yet.

The 2011 award assessments will start in July/August. Please contact us if you would like to be involved. If your business already has an award you will need to be reassessed to keep or upgrade your certification.

Remember to support your local sustainable businesses – and also reduce your “shopping miles”

You don't live in Lincoln but would like to make a difference?

There will soon be links on the LET web site for information about the other Enviro communities.

There are Sustainability Groups in other communities:



ROLLESTON ENVIROTOWN

"A better environment starts with you"

Rolleston Envirotown meetings are held on the third Tuesday evening in the month (during winter starting at 7.00pm and during summer starting at 7.30pm). The meeting venue is Community House in Rolleston, 45 Shelley Street. Email Nicole tonicermu@gmail.com or phone Catherine 347 8240 if you are interested. All welcome. Visit www.rollestonenvirotown.org.nz

The Rolleston Envirotown Market for produce (includes organic) and craft is held on the second Sunday in the month 10am to 1pm. The market is sited in the Rolleston Square carpark area alongside Rolleston Drive. During inclement weather the market will be held along by the shops. BUG-R offer free bicycle maintenance at some of the monthly market days.

The Rolleston Envirotown Community Garden is being led by Sacha, if you would like to help contact sacha.murray@hotmail.com The group meets on the 2nd Tuesday of the month in the Community House, Rolleston.

The Rolleston Envirotown Community Garden group greatly appreciate any help as they continue the process of the creation of their community's garden. For more information, donations, or to simply lend a hand contact Sacha on sacha.murray@hotmail.com or alternatively ring 03 347 8175. They would like to thank the church and sponsors for their help and support to get them to this point. Without this support this project would not have been possible.

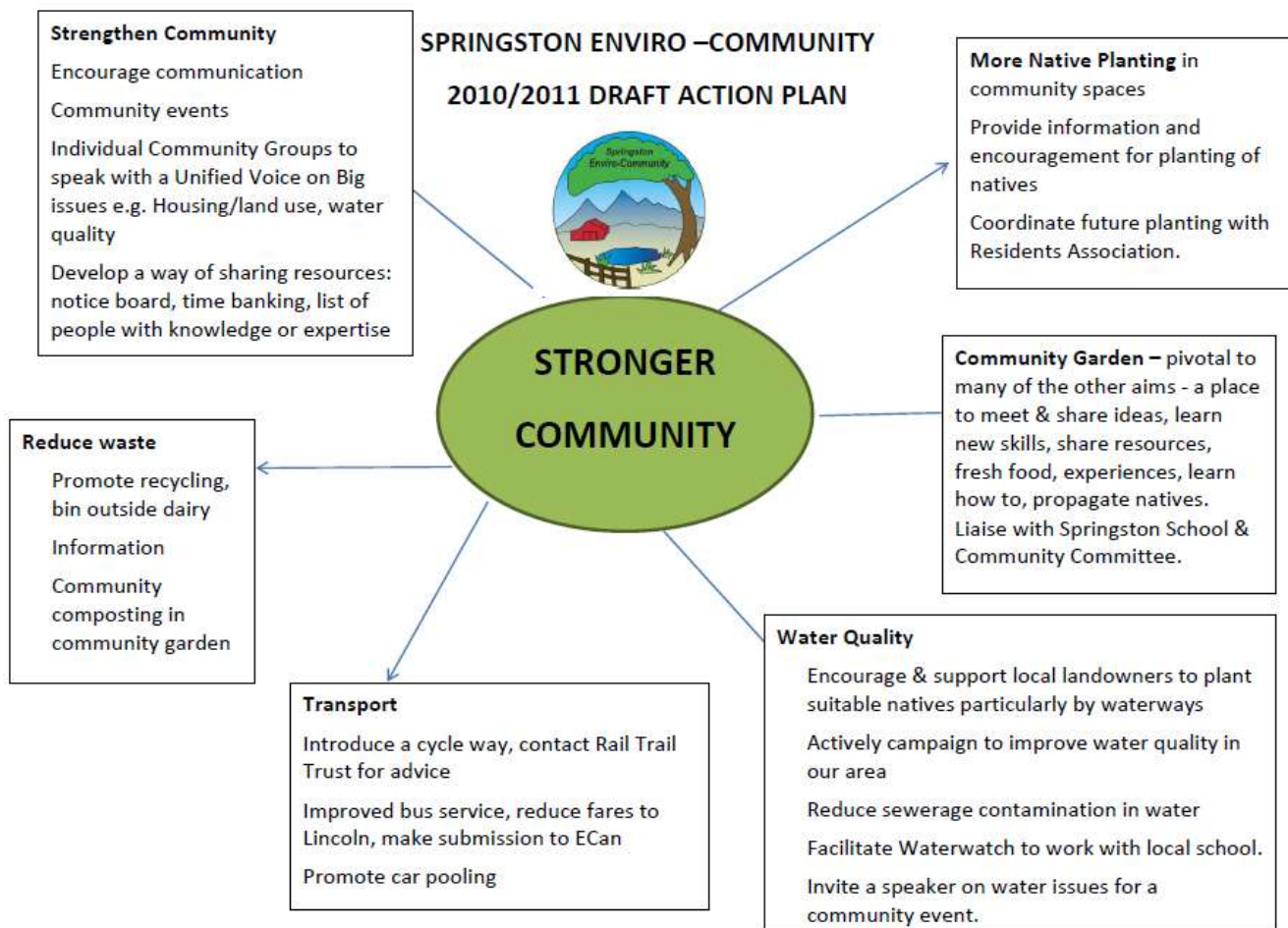
SPRINGSTON ENVIRO-COMMUNITY



The Springston Enviro-Community (SEC) meetings are held on **the 4th Monday of the month**, 7.30pm at the Errol Tweedy Pavilion, Springston Domain, Ellesmere Junction Road. Everyone welcome! The next meeting is on the **27th June everyone welcome**. Come and meet up with a group of enthusiastic locals. If you want to find out more, contact Sue on 329 5858.

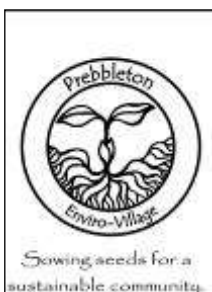
Springston has drafted a Sustainability Action Plan for their community – following a survey and two public meetings (see below). They already have a community garden

planned, with land kindly provided by a local resident. The Springston Community Committee has also restarted their community newsletter, as this was one of the complaints from people that filled in the community survey.



LEESTON ENVIRO TOWN

For more information about Leeston Envirotown Phone: Margaret on 324 3949, or contact Mel melissa.renganathan@gmail.com Leeston took part in the Selwyn Earth Hour lead up, and ran a kids activity morning. They also have a Leeston and Southbridge Responsible Business Award to encourage businesses to operate in an environmentally sustainable fashion.



PREBBLETON ENVIRO-VILLAGE

If you would like to find out more about Prebbleton Enviro-Village please call Nicola Willett on 3497990 or email n.willett@xtra.co.nz . Prebbleton ran a very successful torch light walk for Earth Hour to which about 30 people turned up. They ran a Responsible Business Award for local businesses in 2009 and 2010. They have conducted a community survey and produced a community sustainability action plan. The top issue for the locals is walking and cycle ways.

PEV have worked on a biodiversity corridor along the rail trail cycle way to Prebbleton.

LITTLE RIVER

To contact the Little River group ring Kaite Hansen on 325 1917 or believe33@snap.net.nz

WEST MELTON ENVIRO-COMMUNITY (WMEC)

Interested in Sustainability and Environmental issues?

You are invited to meet with likeminded people to discuss and plan environmental sustainability actions for the West Melton area including the Development of WMEC mission statement and objectives.

Where: West Melton School Library

When: Thursday **14th July at 7.00pm**

Meetings are on the second Thursday of the month. All welcome.

If you would like more information about meetings please do not hesitate to contact Heather McHarg

heather@westmelton.school.nz, 347 8448

or Ingrid McGeachen westmelton.enviro@gmail.com

See the new West Melton Enviro-Community web site! www.westmeltonenviro.org.nz

The West Melton Environmental survey results were presented to the West Melton Enviro Community meeting on the 12th May. It was interesting to see that 61% of respondents considered caring for the environment very important. 65% of respondents would like to see a way of sharing community resources and would also like local workshops on sustainability issues. The respondents suggested many local concerns as well many good suggestions for actions. The meeting started work a community sustainability action plan by using the concerns and issues from the survey and possible actions. The concerns have been roughly grouped in to Water, Transport/traffic, Growth/ Development, Native biodiversity, Energy and Waste. From the survey it was found that many people were interested in local workshops, also in learning more about sustainable energy generation so that may be one of the early actions.

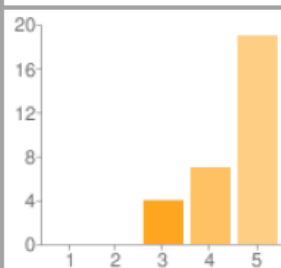
The winners of the \$50 voucher prize from the survey draw were: James and Lisa Marr. Congratulations!

The prize will be presented to them at the next meeting.

The one of the most interesting results are below.

8. Environment

How important is caring for the environment to you?
Select a number that represents your view, with 1 being "not very" and 5 being "extremely important".



Not very important

Extremely important

1 -	Not very important	0	0%
2		0	0%
3		4	13%
4		7	23%
5 -	Extremely important	19	61%

TAI TAPU

If you live in **Tai Tapu** we are hoping to arrange an initial meeting soon. If you are interested contact **Sue on 329 5858**

BURNHAM

If you live in or near Burnham let us know as there is interest in getting a group going there.

DARFIELD

If you live in **Darfield** we are hoping to arrange an initial meeting soon. If you are interested contact **Sue on 329 5858**

The Lincoln Envirotown Trust is providing support to these communities as they get underway with their sustainability plans.

If you live in another community and would like help to get a group started, contact Sue.

We also help other communities outside the Selwyn area.

We have set up “on line communities” for all the “Enviro” groups linked to LET, under the umbrella of “Selwyn groups” <http://selwyncom.onlinegroups.net> . **Have a look!** The idea is to allow a small community or a street etc to easily contact each other – perhaps to say “we have extra pears, who would like some” etc. John Veitch has been our “coach” – Thank you, John

A speaker programme is part of our aim to be a role model for other communities and provide help and support for them to progress towards sustainability. If you would like a speaker for your group or community contact Sue on 329 5858.

Stuff for Enviro Kids

Please send us any ideas, information or links for Enviro Kids!

Lincoln Primary School

- Their Student Envirogroup has been formed with 7 students.
- Each student has been assigned a couple of tasks
- Two of these students, Ella and Rafi liaise with Lincoln Envirotown.
- The Envirogroup, Principal etc have been involved in meetings with University students who will be running several landscaping/school environment projects in the school this term.
- Other Envirogroup tasks include McCain’s veggie patch programme, school gardens, liaison with High school, fundraising ideas, other new ideas.

Don’t forget to enter the Lincoln Envirotown 2011 Writing Competition

Write an illustrated story on an environmental/sustainability issue

Details on the entry form at the end of this newsletter

Lincoln Envirotown is running a kid’s holiday activity in conjunction with KidsFest on the 27th July starting at 10.30am. It will be held in the new Lincoln Event Centre.

Suitable for 3-12 year old children, although older children could come as helpers if you contact us at least a week before hand. Children need to come with an adult care-giver.

Please donate a \$2 gold coin per child.

Other useful info

<http://happyzine.co.nz/2011/04/23/revolution-in-building-makes-exceptional-home-performance-affordable-introducing-little-greenie/> A Golden Bay home dubbed Little Greenie shows that Kiwi homebuilders could be getting significantly better performance for their money.

Little Greenie, designed and built by Lawrence McIntyre, is the highest rated energy efficient house in the country (9/10 stars) and provides exceptional levels of comfort with heating bills of less than \$70 per year. A report, independently prepared for the Hikurangi Foundation, the Energy Efficiency Conservation Authority (EECA) and Little Greenie Design & Build by Housing Analyst Verney Ryan, details how Little Greenie is designed with five major principles in mind – energy efficiency, low maintenance and longevity, quality craftsmanship, and value for money. It details how innovative double frame construction and attention to detail, especially in insulating, sets Little Greenie apart from normal builds.

The Report concludes, “Little Greenie provides a practical and achievable method of building to a higher level of performance ... and delivers a unique opportunity to educate and inspire the residential construction sector in NZ”.

Little Greenie’s designer and builder Mr McIntyre, says “It would take very little up skilling for every builder in New Zealand to use Little Greenie principles. And it would change the standard of kiwi homes overnight. But architects and owners are slow on the uptake. Wake up!”

Waihora Ellesmere Trust (WET) WET has produced a new leaflet featuring advice on riparian restoration based on our experience of planting over 50,000 native plants over the past couple of years. The leaflet covers the steps involved in establishing a successful riparian restoration project and includes a breakdown of costs. The leaflet can be downloaded from the website and additional, more detailed information will be added over the next few weeks. [New leaflet](#)
Get full newsletter from: www.wet.org.nz

Free heat – use the sun

Did you know that two square metres of north-facing window can bring in as much energy as a one kilowatt heater? So, on those beautiful blue sky autumn and winter Canterbury days make the most of the sun by keeping those north facing windows clean and free from any shading by trees and bushes. But do remember to keep the curtains closed until that sun appears and draw them again in the late afternoon to keep as much of the heat in as possible.

Christchurch Home Energy Advisors www.energyadvice.org.nz

Check out our Web site!

www.lincolnenvirotown.org.nz

Here you can check out back issues of our newsletters, find sustainability links and much more. **Please let us know what information you would like.**

Submissions:

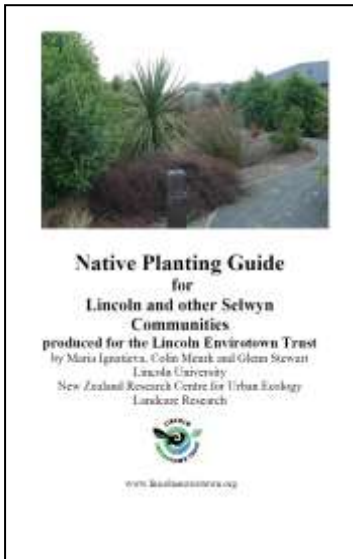
LET frequently makes submissions to Government, ECan and the SDC as well as to other organisations. If you are interested in helping with submissions or have an issue you think that LET might be interested in making a submission on, please contact Sue on 329 5858

Get Involved!

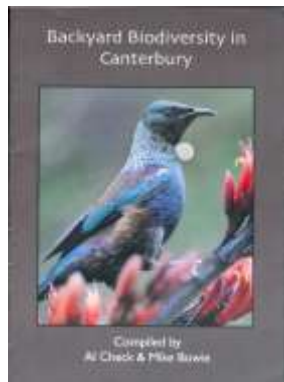
We have a number of sub-committees and interest groups – let us know if you would like to join groups interested in energy generation, water conservation, native biodiversity, children’s environmental education, reducing light pollution (starlight project) and many other groups – you could start one! Our energy generation group is collecting information about the feasibility of wind and solar generation, which will eventually be available on our web site.

Lincoln and Selwyn Native Planting Guide – now updated!

Ever wondered which native New Zealand plants might add that special something to your landscaping? A Lincoln and Selwyn planting guide written for LET with help from Landcare Research and Lincoln University will help with basic background information and planting suggestions.



This guide will help you decide which native plants are suitable for your garden. It gives ideas for shrubberies, hedges, pergolas, herbaceous borders, native lawns, rock gardens and rain gardens. Ecosourced natives are much more likely to survive in our local conditions, without as much care and watering as non-natives. Be part of the Greenway Canterbury movement aiming to spread corridors of natives from the mountains to the sea so that our threatened native plants and animals have somewhere to live and can move from one habitat to the next. This guide is available from the Lincoln Library and Lincoln CRT Real Estate. It is also available as a downloadable file from our web site: www.lincolnenvironment.org.nz. Thank you to Kiwiflora and Southern Woods for their sponsorship.



Backyard Biodiversity in Canterbury
This booklet is available **FREE** from the Lincoln Library and other Selwyn libraries on request. It is also downloadable as a pdf from the LET web site from the resources page.

Fed up with all that junk mail but still want to receive the local papers?
Collect one of our mail box stickers from the Lincoln Library for a gold coin, or contact us

NO JUNK MAIL
LOCAL NEWSPAPERS PLEASE
"Taking responsibility for a sustainable future"
www.lincolnenvironment.org.nz

Borrow the LET Cent-a-meter
The LET Cent-a-meter is a tool that assists homeowners with information about their own energy use. The Cent-a-meter is available from LET for at least \$5 dollars donation and a \$100 refundable deposit. **If interested, contact Sue Jarvis at 329-5858.**



Lincoln Envirotown 2011 Writing Competition

Write an illustrated story on an environmental/sustainability issue

- What do you think is the main environmental issue facing us in Canterbury? You might need to ask some grown-ups or do some research on this.
- What do you think we should do to solve it - what are the possible solutions? What do you think is the best solution?
- Write a story to tell us how your solution would work. The story could include how you or other young people might carry out your ideas to make a difference, and what difficulties they might have to overcome. Illustrate your story, perhaps with a picture showing what is happening now and what it will be like in the future when your ideas have been carried out. Or you could show what the people in your story will be doing.

For Parents and Teachers: Please help by encouraging discussion of the issues and possible solutions. It is likely that the children will need to gather some information before they write their story.

We will judge the entries for (age appropriate) creativity, knowledge writing ability, illustrations.

Please illustrate your story and use **A4 sized paper only**. The deadline will be **Friday 22nd July**.

There will be prizes for each age group: 6 and under, 7-10, 11-14, 15-18

We hope to make the best stories into a book to be available locally, as we did with the previous Lincoln stories. The National Library has asked for a copy of our other books - so your story might be there too!

Please attach an entry form to your entry (see below). You can enter more than 1 story.

Entry form for the 2011 writing competition

(please attach these details to your story and picture)

Your Name:

(please print clearly)

Home Phone number:

If you wrote this at school, please give the name of your school and your teacher:

Your Age:

The issue you have chosen:

Title of your story:

The places you gathered your information (such names of books, web sites, experts you interviewed etc):

Your story has to be your own work; however, you may have needed some help. Did you have help with the writing of your story or the drawing in your entry? Yes/No

If yes:

My helper was:

They helped with:

My idea for next year's writing competition:

Deadline! Your story needs to be with us by the **22nd July 2011**. It can be dropped in to the Lincoln Library, or it can be mailed to: **Sue Jarvis, 694 Gould's Road, RD4 Christchurch 7674**.

Summary of up-coming events

Date	Event	Where
Monday 27 th June 7.30pm	Springston Enviro Community meeting. Planning - especially new community garden.	The Errol Tweedy Pavilion, Springston Domain, Ellesmere Junction Road. Everyone welcome!
Any time	Weeding and mulching	Springs Road/ Gerald Street corner planting on Plant & Food land
Sunday 3 rd July 2.00pm onwards	Planting and working bee	Mahoe Reserve, Boundary Road All welcome
Monday 4 th July 7.30pm	LET meeting	Lincoln Event centre, meeting room All welcome
Thursday 14 th July, 7.00pm	West Melton Enviro Community meeting – working on the action plan	West Melton School All welcome
Friday 22nd July	Writing Competition	3-18 year olds
Thursday 27th of July 10:30-11:30.	LET KidsFest July holiday activity morning	Lincoln Event Centre